

GOODREST FARM BATTERY ENERGY STORAGE SYSTEM PUBLIC CONSULTATION – HAVE YOUR SAY

Goodrest Farm Battery Energy Storage System (BESS) is a proposal to provide crucial services to the local electricity distribution network to ensure the supply of **clean** and **cost-effective** electricity to domestic, commercial and industrial users of the electricity network.

- ✓ This location has been chosen primarily due to the proximity to a viable point of connection into the grid network, at Kitwell substation.
- ✓ The site is approximately 7Ha in size and is currently used for sheep grazing.
- ✓ Less than 2Ha of the land would be used for the electrical infrastructure.
- ✓ A minimum **10% of Biodiversity Net Gain** will be delivered through a variety of wildflower meadow, native planting and habitat management
- ✓ The site would predominately consist of shipping containers around 2.5m high and screened using bunding and landscaping.
- ✓ Goodrest Farm BESS will store enough power to provide for **160,000 homes** for two hours. Enough electricity to power the entire borough of Dudley.

Why is it needed?

As the UK shifts towards more renewable energy sources, like solar and wind, BESS sites enable energy from renewables to be **stored** and then **released** when the power is needed most.

The UK Government estimates that technologies like BESS, supporting the integration of low-carbon power, can help save the UK energy system up to **£40 billion** by 2050.

Public Consultation

To help shape the development, we are holding a three-week public consultation to present our plans for the project and invite feedback from the local community.

This consultation will run from **Friday 5th April to Monday 29th April 2024**. We invite you to view the proposals and provide your feedback.

All information is available on our **website** and we invite you to attend our drop-in information event for you to view our emerging plans and speak to the project team.

PUBLIC INFORMATION EVENT



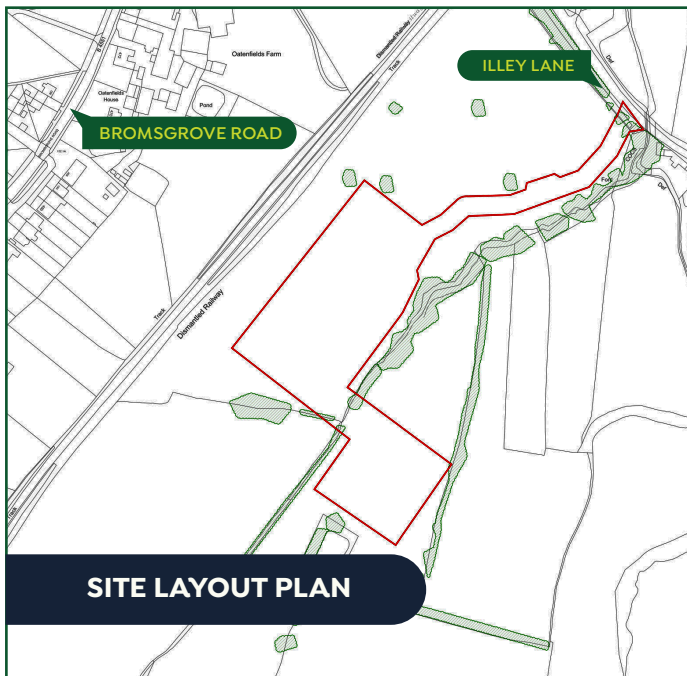
Wednesday 10th April 2024



15:00- 18:00



Romsley Scout Centre, St Kenelm's Road,
Romsley, Halesowen, B62 0PG



We want your views

Understanding the views and gaining local knowledge from the community and other stakeholders is important to us. It will enable us to create a development that meets the needs of the local community.

We welcome any views and questions throughout the consultation to help shape the development of our plans. The full details of the project and a feedback form are available on the project website: www.greenergy.eu/goodrest-farm

Alternatively, you can contact us by email: projectsuk@greenergy.eu

We look forward to hearing from you.



GOODREST FARM

BATTERY ENERGY STORAGE SYSTEM